

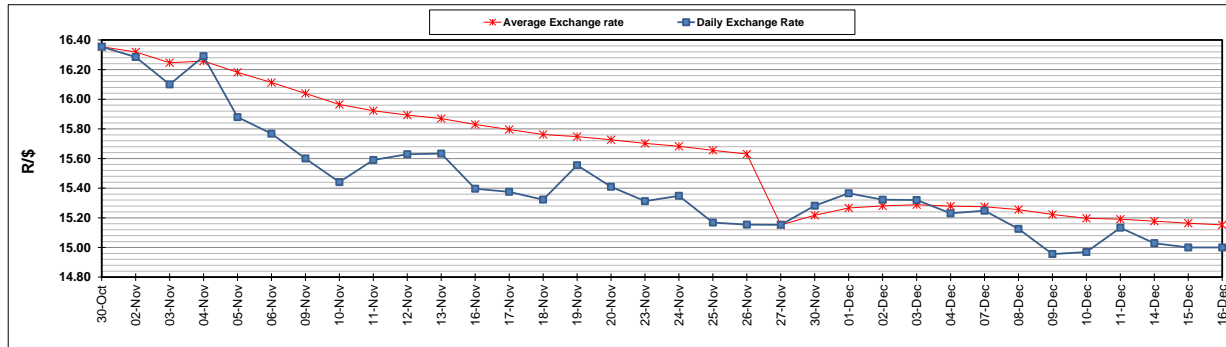
	PETROL 95 ULP	PETROL 93 ULP & LRP	DIESEL 0.05%	DIESEL 0.005%	ILL. PAR.
GAUTENG PUMP PRICE (SA c/l) AS FROM 02/12/2020	1,446.000	1,426.000	-	-	-
WHOLESALE PRICE (SA c/l) AS FROM 02/12/2020	-	-	1,245.420	1,247.820	684.688
SINGLE NATIONAL MAXIMUM RETAIL PRICE	-	-	-	-	856.000
BASIC FUEL PRICE - 16/12/2020 (SA c/l)	529.615	523.371	549.259	549.863	536.587
PRESS RELEASE CONTRIBUTION TO BFP 02/12/2020 - 16/12/2020 (SA c/l)	479.170	469.170	486.630	489.030	472.128
UNIT OVER/(UNDER) RECOVERY - 16/12/2020 (SA c/l)	(50.445)	(54.201)	(62.629)	(60.833)	(64.459)
AVERAGE BASIC FUEL PRICE 27/11/2020 - 16/12/2020	517.744	511.320	537.227	538.491	521.087
AVERAGE UNIT OVER/(UNDER) RECOVERY 27/11/2020 - 16/12/2020	(32.724)	(36.300)	(53.169)	(52.032)	(53.459)

### ANALYSIS MOVEMENT OF AVERAGE OVER/(UNDER) RECOVERY

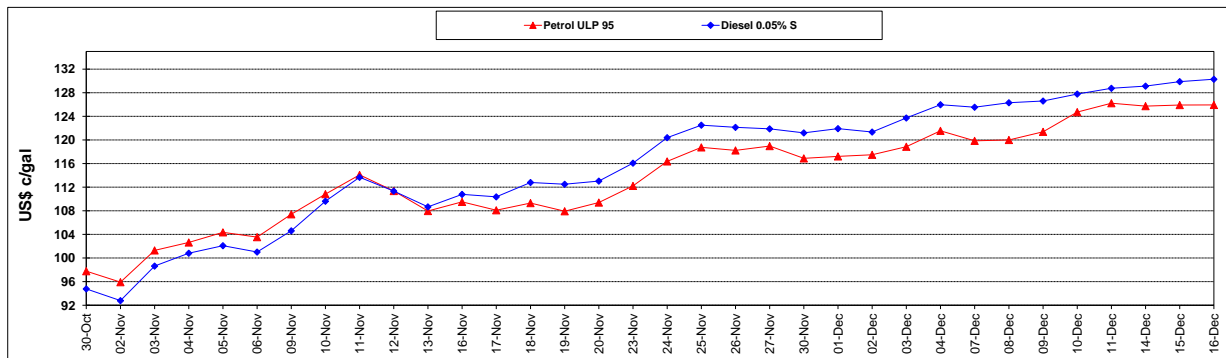
	PETROL 95	PETROL 93	DIESEL 0.05%	DIESEL 0.005%	ILL. PAR.
- MOVEMENT IN INTERNATIONAL PRODUCT PRICES	(49.064)	(52.437)	(70.123)	(69.027)	(69.904)
- MOVEMENT IN EXCHANGE RATE	16.340	16.137	16.955	16.995	16.445
AVERAGE UNIT OVER/(UNDER) RECOVERY 27/11/2020 - 16/12/2020	(32.724)	(36.300)	(53.169)	(52.032)	(53.459)

### R/\$ EXCHANGE RATE - (R/\$15.000 - 16/12/2020)

#### EXCHANGE RATE USED IN BASIC FUEL PRICE



#### INTERNATIONAL PRODUCT PRICES OF BASKET USED IN BASIC FUEL PRICE



#### BASIC FUEL PRICE IN SA CENTS PER LITRE

